
Variational Inference with Tail-adaptive f -Divergence

Dilin Wang
UT Austin
dilin@cs.utexas.edu

Hao Liu *
UESTC
uestcliuhao@gmail.com

Qiang Liu
UT Austin
lqiang@cs.utexas.edu

Abstract

Variational inference with α -divergences has been widely used in modern probabilistic machine learning. Compared to Kullback-Leibler (KL) divergence, a major advantage of using α -divergences (with positive α values) is their *mass-covering* property. However, estimating and optimizing α -divergences require to use importance sampling, which may have large or infinite variance due to heavy tails of importance weights. In this paper, we propose a new class of *tail-adaptive f -divergences* that adaptively change the convex function f with the tail distribution of the importance weights, in a way that theoretically guarantees finite moments, while simultaneously achieving mass-covering properties. We test our method on Bayesian neural networks, and apply it to improve a recent soft actor-critic (SAC) algorithm (Haarnoja et al., 2018) in deep reinforcement learning. Our results show that our approach yields significant advantages compared with existing methods based on classical KL and α -divergences.

1 Introduction

Variational inference (VI) (e.g., Jordan et al., 1999; Wainwright et al., 2008) has been established as a powerful tool in modern probabilistic machine learning for approximating intractable posterior distributions. The basic idea is to turn the approximation problem into an optimization problem, which finds the best approximation of an intractable distribution from a family of tractable distributions by minimizing a divergence objective function. Compared with Markov chain Monte Carlo (MCMC), which is known to be consistent but suffers from slow convergence, VI provides biased results but is often practically faster. Combined with techniques like stochastic optimization (Ranganath et al., 2014; Hoffman et al., 2013) and reparameterization trick (Kingma & Welling, 2014), VI has become a major technical approach for advancing Bayesian deep learning, deep generative models and deep reinforcement learning (e.g., Kingma & Welling, 2014; Gal & Ghahramani, 2016; Levine, 2018).

A key component of successful variational inference lies on choosing a proper divergence metric. Typically, closeness is defined by the KL divergence $\text{KL}(q \parallel p)$ (e.g., Jordan et al., 1999), where p is the intractable distribution of interest and q is a simpler distribution constructed to approximate p . However, VI with KL divergence often under-estimates the variance and may miss important local modes of the true posterior (e.g., Christopher, 2016; Blei et al., 2017). To mitigate this issue, alternative metrics have been studied in the literature, a large portion of which are special cases of f -divergence (e.g., Csiszár & Shields, 2004):

$$D_f(p \parallel q) = \mathbb{E}_{x \sim q} \left[f \left(\frac{p(x)}{q(x)} \right) - f(1) \right], \quad (1)$$

where $f: \mathbb{R}_+ \rightarrow \mathbb{R}$ is any convex function. The most notable class of f -divergence that has been exploited in VI is α -divergence, which takes $f(t) = t^\alpha / (\alpha(\alpha - 1))$ for $\alpha \in \mathbb{R} \setminus \{0, 1\}$. By choosing different α , we get a large number of well-known divergences as special cases, including the standard

*Work done at UT Austin

KL divergence objective $\text{KL}(q \parallel p)$ ($\alpha \rightarrow 0$), the KL divergence with the reverse direction $\text{KL}(p \parallel q)$ ($\alpha \rightarrow 1$) and the χ^2 divergence ($\alpha = 2$). In particular, the use of general α -divergence in VI has been widely discussed (e.g., Minka et al., 2005; Hernández-Lobato et al., 2016; Li & Turner, 2016); the reverse KL divergence is used in expectation propagation (Minka, 2001; Opper & Winther, 2005), importance weighted auto-encoders (Burda et al., 2016), and the cross entropy method (De Boer et al., 2005); χ^2 -divergence is exploited for VI (e.g., Dieng et al., 2017), but is more extensively studied in the context of adaptive importance sampling (IS) (e.g., Cappé et al., 2008; Ryu & Boyd, 2014; Cotter et al., 2015), since it coincides with the variance of the IS estimator with q as the proposal.

A major motivation of using α -divergence contributes to its *mass-covering* property: when $\alpha > 0$, the optimal approximation q tends to cover more modes of p , and hence better accounts for the uncertainty in p . Typically, larger values of α enforce stronger mass-covering properties. In practice, however, α divergence and its gradient need to be estimated empirically using samples from q . Using large α values may cause high or infinite variance in the estimation because it involves estimating the α -th power of the density ratio $p(x)/q(x)$, which is likely distributed with a heavy or fat tail (e.g., Resnick, 2007). In fact, when q is very different from p , the expectation of ratio $(p(x)/q(x))^\alpha$ can be infinite (that is, α -divergence does not exist). This makes it problematic to use large α values, despite the mass-covering property it promises. In addition, it is reasonable to expect that the optimal setting of α should vary across training processes and learning tasks. Therefore, it is desirable to design an approach to choose α *adaptively* and *automatically* as q changes during the training iterations, according to the distribution of the ratio $p(x)/q(x)$.

Based on theoretical observations on f -divergence and fat-tailed distributions, we design a new class of f -divergence which is *tail-adaptive* in that it uses different f functions according to the tail distribution of the density ratio $p(x)/q(x)$ to simultaneously obtain stable empirical estimation and a strongest possible mass-covering property. This allows us to derive a new adaptive f -divergence-based variational inference by combining it with stochastic optimization and reparameterization gradient estimates. Our main method (Algorithm 1) has a simple form, which replaces the f function in (1) with a rank-based function of the empirical density ratio $w = p(x)/q(x)$ at each gradient descent step of q , whose variation depends on the distribution of w and does not explode regardless the tail of w .

Empirically, we show that our method can better recover multiple modes for variational inference. In addition, we apply our method to improve a recent soft actor-critic (SAC) algorithm (Haarnoja et al., 2018) in reinforcement learning (RL), showing that our method can be used to optimize multi-modal loss functions in RL more efficiently.

2 f -Divergence and Friends

Given a distribution $p(x)$ of interest, we want to approximate it with a simpler distribution from a family $\{q_\theta(x) : \theta \in \Theta\}$, where θ is the variational parameter that we want to optimize. We approach this problem by minimizing the f -divergence between q_θ and p :

$$\min_{\theta \in \Theta} \left\{ D_f(p \parallel q_\theta) = \mathbb{E}_{x \sim q_\theta} \left[f \left(\frac{p(x)}{q_\theta(x)} \right) - f(1) \right], \right\} \quad (2)$$

where $f: \mathbb{R}_+ \rightarrow \mathbb{R}$ is any twice differentiable convex function. It can be shown by Jensen’s inequality that $\mathbb{D}_f(p \parallel q) \geq 0$ for any p and q . Further, if $f(t)$ is strictly convex at $t = 1$, then $D_f(p \parallel q) = 0$ implies $p = q$. The optimization in (2) can be solved approximately using stochastic optimization in practice by approximating the expectation $\mathbb{E}_{x \sim q_\theta}[\cdot]$ using samples drawing from q_θ at each iteration.

The f -divergence includes a large spectrum of important divergence measures. It includes KL divergence in both directions,

$$\text{KL}(q \parallel p) = \mathbb{E}_{x \sim q} \left[\log \frac{q(x)}{p(x)} \right], \quad \text{KL}(p \parallel q) = \mathbb{E}_{x \sim q} \left[\frac{p(x)}{q(x)} \log \frac{p(x)}{q(x)} \right], \quad (3)$$

which correspond to $f(t) = -\log t$ and $f(t) = t \log t$, respectively. $\text{KL}(q \parallel p)$ is the typical objective function used in variational inference; the reversed direction $\text{KL}(p \parallel q)$ is also used in various settings (e.g., Minka, 2001; Opper & Winther, 2005; De Boer et al., 2005; Burda et al., 2016).

More generally, f -divergence includes the class of α -divergence, which takes $f_\alpha(t) = t^\alpha/(\alpha(\alpha-1))$, $\alpha \in \mathbb{R} \setminus \{0, 1\}$ and hence

$$D_{f_\alpha}(p \parallel q) = \frac{1}{\alpha(\alpha-1)} \mathbb{E}_{x \sim q} \left[\left(\frac{p(x)}{q(x)} \right)^\alpha - 1 \right]. \quad (4)$$

One can show that $\text{KL}(q \parallel p)$ and $\text{KL}(p \parallel q)$ are the limits of $D_{f_\alpha}(q \parallel p)$ when $\alpha \rightarrow 0$ and $\alpha \rightarrow 1$, respectively. Further, one obtain Helinger distance and χ^2 -divergence as $\alpha = 1/2$ and $\alpha = 2$, respectively. In particular, χ^2 -divergence ($\alpha = 2$) plays an important role in adaptive importance sampling, because it equals the variance of the importance weight $w = p(x)/q(x)$ and minimizing χ^2 -divergence corresponds to finding an optimal importance sampling proposal.

3 α -Divergence and Fat Tails

A major motivation of using α divergences as the objective function for approximate inference is their *mass-covering* property (also known as the zero-avoiding behavior). This is because α -divergence is proportional to the α -th moment of the density ratio $p(x)/q(x)$. When α is positive and large, large values of $p(x)/q(x)$ are strongly penalized, preventing the case of $q(x) \ll p(x)$. In fact, whenever $D_{f_\alpha}(p \parallel q) < \infty$, we have $p(x) > 0$ imply $q(x) > 0$. This means that the probability mass and local modes of p are taken into account in q properly.

Note that the case when $\alpha \leq 0$ exhibits the opposite property, that is, $p(x) = 0$ must imply $q(x) = 0$ to make $D_{f_\alpha}(q \parallel p)$ finite when $\alpha \leq 0$; this includes the typical KL divergence $\text{KL}(q \parallel p)$ ($\alpha = 0$), which is often criticized for its tendency to under-estimate the uncertainty.

Typically, using larger values of α enforces stronger *mass-covering* properties. In practice, however, larger values of α also increase the variance of the empirical estimators, making it highly challenging to optimize. In fact, the expectation in (4) may not even exist when α is too large. This is because the density ratio $w := p(x)/q(x)$ often has a fat-tailed distribution.

A non-negative random variable w is called fat-tailed² (e.g., Resnick, 2007) if its tail probability $\bar{F}_w(t) := \Pr(w \geq t)$ is asymptotically equivalent to $t^{-\alpha_*}$ as $t \rightarrow +\infty$ for some finite positive number α_* (denoted by $\bar{F}_w(t) \sim t^{-\alpha_*}$), which means that

$$\bar{F}_w(t) = t^{-\alpha_*} L(t),$$

where L is a slowly varying function that satisfies $\lim_{t \rightarrow +\infty} L(ct)/L(t) = 1$ for any $c > 0$. Here α_* determines the fatness of the tail and is called the tail index of w . For a fat-tailed distribution with index α_* , its α -th moment exists only if $\alpha < \alpha_*$, that is, $\mathbb{E}[w^\alpha] < \infty$ iff $\alpha < \alpha_*$. It turns out the density ratio $w := p(x)/q(x)$, when $x \sim q$, tends to have a fat-tailed distribution when q is more peaked than p . The example below illustrates this with simple Gaussian distributions.

Example 3.1. Assume $p(x) = \mathcal{N}(x; 0, \sigma_p^2)$ and $q(x) = \mathcal{N}(x; 0, \sigma_q^2)$. Let $x \sim q$ and $w = p(x)/q(x)$ the density ratio. If $\sigma_p > \sigma_q$, then w has a fat-tailed distribution with index $\alpha_* = \sigma_p^2/(\sigma_p^2 - \sigma_q^2)$.

On the other hand, if $\sigma_p \leq \sigma_q$, then w is bounded and not fat-tailed (effectively, $\alpha_* = +\infty$).

By the definition above, if the importance weight $w = p(x)/q(x)$ has a tail index α_* , the α -divergence $D_{f_\alpha}(p \parallel q)$ exists only if $\alpha < \alpha_*$. Although it is desirable to use α -divergence with large values of α as VI objective function, it is important to keep α smaller than α_* to ensure that the objective and gradient are well defined. The problem, however, is that the tail index α_* is unknown in practice, and may change dramatically (e.g., even from finite to infinite) as q is updated during the optimization process. This makes it suboptimal to use a pre-fixed α value. One potential way to address this problem is to estimate the tail index α_* empirically at each iteration using a tail index estimator (e.g., Hill et al., 1975; Vehtari et al., 2015). Unfortunately, tail index estimation is often challenging and requires a large number of samples. The algorithm may become unstable if α_* is over-estimated.

4 Hessian-based Representation of f -Divergence

In this work, we address the aforementioned problem by designing a generalization of f -divergence in which f adaptively changes with p and q , in a way that always guarantees the existence of the

²Fat-tailed distributions is a sub-class of heavy-tailed distributions, which are distributions whose tail probabilities decay slower than exponential functions, that is, $\lim_{t \rightarrow +\infty} \exp(\lambda t) \bar{F}_w(t) = \infty$ for all $\lambda > 0$.

expectation, while simultaneously achieving (theoretically) strong mass-covering equivalent to that of the α -divergence with $\alpha = \alpha^*$.

One challenge of designing such adaptive f is that the convex constraint over function f is difficult to express computationally. Our first key observation is that it is easier to specify a convex function f through its second order derivative f'' , which can be any non-negative function. It turns out f -divergence, as well as its gradient, can be conveniently expressed using f'' , without explicitly defining the original f .

Proposition 4.1. 1) Any twice differentiable convex function $f: \mathbb{R}_+ \cup \{0\} \rightarrow \mathbb{R}$ with finite $f(0)$ can be decomposed into linear and nonlinear components as follows

$$f(t) = (at + b) + \int_0^\infty (t - \mu)_+ h(\mu) d\mu, \quad (5)$$

where h is a non-negative function, $(t)_+ = \max(0, t)$, and $a, b \in \mathbb{R}$. In this case, $h = f''(t)$, $a = f'(0)$ and $b = f(0)$. Conversely, any non-negative function h and $a, b \in \mathbb{R}$ specifies a convex function.

2) This allows us to derive an alternative representation of f -divergence:

$$D_f(p \parallel q) = \int_0^\infty f''(\mu) \mathbb{E}_{x \sim q} \left[\left(\frac{p(x)}{q(x)} - \mu \right)_+ \right] d\mu - c, \quad (6)$$

where $c := \int_0^1 f''(\mu)(1 - \mu) d\mu = f(1) - f(0) - f'(0)$ is a constant.

Proof. If $f(t) = (at + b) + \int_0^\infty (t - \mu)_+ h(\mu) d\mu$, calculation shows

$$f'(t) = a + \int_0^t h(\mu) d\mu, \quad f''(t) = h(t).$$

Therefore, f is convex iff h is non-negative. See Appendix for the complete proof. \square

Eq (6) suggests that all f -divergences are conical combinations of a set of special f -divergences of form $\mathbb{E}_{x \sim q} [(p(x)/q(x) - \mu)_+ - f(1)]$ with $f(t) = (t - \mu)_+$. Also, every f -divergence is completely specified by the Hessian f'' , meaning that adding f with any linear function $at + b$ does not change $D_f(p \parallel q)$. Such integral representation of f -divergence is not new; see e.g., Feldman & Osterreicher (1989); Osterreicher (2003); Liese & Vajda (2006); Reid & Williamson (2011); Sason (2018).

For the purpose of minimizing $\mathbb{D}_f(p \parallel q_\theta)$ ($\theta \in \Theta$) in variational inference, we are more concerned with calculating the gradient, rather than the f -divergence itself. It turns out the gradient of $\mathbb{D}_f(p \parallel q_\theta)$ is also directly related to Hessian f'' in a simple way.

Proposition 4.2. 1) Assume $\log q_\theta(x)$ is differentiable w.r.t. θ , and f is a differentiable convex function. For f -divergence defined in (2), we have

$$\nabla_\theta D_f(p \parallel q_\theta) = -\mathbb{E}_{x \sim q_\theta} \left[\rho_f \left(\frac{p(x)}{q_\theta(x)} \right) \nabla_\theta \log q_\theta(x) \right], \quad (7)$$

where $\rho_f(t) = f'(t)t - f(t)$ (equivalently, $\rho'_f(t) = f''(t)t$ if f is twice differentiable).

2) Assume $x \sim q_\theta$ is generated by $x = g_\theta(\xi)$ where $\xi \sim q_0$ is a random seed and g_θ is a function that is differentiable w.r.t. θ . Assume f is twice differentiable and $\nabla_x \log(p(x)/q_\theta(x))$ exists. We have

$$\nabla_\theta D_f(p \parallel q_\theta) = -\mathbb{E}_{x=g_\theta(\xi), \xi \sim q_0} \left[\gamma_f \left(\frac{p(x)}{q_\theta(x)} \right) \nabla_\theta g_\theta(\xi) \nabla_x \log(p(x)/q_\theta(x)) \right], \quad (8)$$

where $\gamma_f(t) = \rho'_f(t)t = f''(t)t^2$.

The result above shows that the gradient of f -divergence depends on f through ρ_f or γ_f . Taking α -divergence ($\alpha \notin \{0, 1\}$) as example, we have

$$f(t) = t^\alpha / (\alpha(\alpha - 1)), \quad \rho_f(t) = t^\alpha / \alpha, \quad \gamma_f(t) = t^\alpha,$$

all of which are proportional to the power function t^α . For $\text{KL}(q \parallel p)$, we have $f(t) = -\log t$, yielding $\rho_f(t) = \log t - 1$ and $\gamma_f(t) = 1$; for $\text{KL}(p \parallel q)$, we have $f(t) = t \log t$, yielding $\rho_f(t) = t$ and $\gamma_f(t) = t$.

The formulas in (7) and (8) are called the *score-function gradient* and *reparameterization gradient* (Kingma & Welling, 2014), respectively. Both equal the gradient in expectation, but are computationally different and yield empirical estimators with different variances. In particular, the score-function gradient in (7) is “gradient-free” in that it does not require calculating the gradient of the distribution $p(x)$ of interest, while (8) is “gradient-based” in that it involves $\nabla_x \log p(x)$. It has been shown that optimizing with reparameterization gradients tend to give better empirical results because it leverages the gradient information $\nabla_x \log p(x)$, and yields a lower variance estimator for the gradient (e.g., Kingma & Welling, 2014).

Our key observation is that we can directly specify f through any increasing function ρ_f , or non-negative function γ_f in the gradient estimators, without explicitly defining f .

Proposition 4.3. *Assume $f: \mathbb{R}_+ \rightarrow \mathbb{R}$ is convex and twice differentiable, then*

- 1) ρ_f in (7) is a monotonically increasing function on \mathbb{R}_+ . In addition, for any differentiable increasing function ρ , there exists a convex function f such that $\rho_f = \rho$;
- 2) γ_f in (8) is non-negative on \mathbb{R}_+ , that is, $\gamma_f(t) \geq 0, \forall t \in \mathbb{R}_+$. In addition, for any non-negative function γ , there exists a convex function f such that $\gamma_f = \gamma$;
- 3) if $\rho'_f(t)$ is strictly increasing at $t = 1$ (i.e., $\rho'_f(1) > 0$), or $\gamma_f(t)$ is strictly positive at $t = 1$ (i.e., $\gamma_f(1) > 0$), then $\mathbb{D}_f(p \parallel q) = 0$ implies $p = q$.

Proof. Because f is convex ($f''(t) \geq 0$), we have $\gamma_f(t) = f''(t)t^2 \geq 0$ and $\rho'_f(t) = f''(t)t \geq 0$ on $t \in \mathbb{R}_+$, that is, γ_f is non-negative and ρ_f is increasing on \mathbb{R}_+ . If ρ_t is strictly increasing (or γ_f is strictly positive) at $t = 1$, we have f is strictly convex at $t = 1$, which guarantees $\mathbb{D}_f(p \parallel q) = 0$ imply $p = q$.

For non-negative function $\gamma(t)$ (or increasing function $\rho(t)$) on \mathbb{R}_+ , any convex function f whose second-order derivative equals $\gamma(t)/t^2$ (or $\rho'_f(t)/t$) satisfies $\gamma_f = \gamma$ (resp. $\rho_f = \rho$). \square

5 Safe f -Divergence with Inverse Tail Probability

The results above show that it is sufficient to find an increasing function ρ_f , or a non-negative function γ_f to obtain adaptive f -divergence with computable gradients. In order to make the f -divergence “safe”, we need to find ρ_f or γ_f that adaptively depends on p and q such that the expectation in (7) and (8) always exists. Because the magnitude of $\nabla_\theta \log q_\theta(x)$, $\nabla_x \log(p(x)/q_\theta(x))$ and $\nabla_\theta g_\theta(\xi)$ are relatively small compared with the ratio $p(x)/q(x)$, we can mainly consider designing function ρ (or γ) such that they yield finite expectation $\mathbb{E}_{x \sim q}[\rho(p(x)/q(x))] < \infty$; meanwhile, we should also keep the function large, preferably with the same magnitude as t^{α_*} , to provide a strong mode-covering property. As it turns out, the inverse of the tail probability naturally achieves all these goals.

Proposition 5.1. *For any random variable w with tail distribution $\bar{F}_w(t) := \Pr(w \geq t)$ and tail index α_* , we have*

$$\mathbb{E}[\bar{F}_w(w)^\beta] < \infty, \quad \text{for any } \beta > -1.$$

Also, we have $\bar{F}_w(t)^\beta \sim t^{-\beta\alpha_}$, and $\bar{F}_w(t)^\beta$ is always non-negative and monotonically increasing when $\beta < 0$.*

Proof. Simply note that $\mathbb{E}[\bar{F}_w(w)^\beta] = \int \bar{F}_w(t)^\beta d\bar{F}_w(t) = \int_0^1 t^\beta dt$, which is finite only when $\beta > -1$. The non-negativity and monotonicity of $\bar{F}_w(t)^\beta$ are obvious. $\bar{F}_w(t)^\beta \sim t^{-\beta\alpha_*}$ directly follows the definition of the tail index. \square

This motivates us to use $\bar{F}_w(t)^\beta$ to define ρ_f or γ_f , yielding two versions of “safe” tail-adaptive f divergences. Note that here f is defined implicitly through ρ_f or γ_f . Although it is possible to derive the corresponding f and $D_f(p \parallel q)$, there is no computational need to do so, since optimizing the objective function only requires calculating the gradient, which is defined by ρ_f or γ_f .

Algorithm 1 Variational Inference with Tail-adaptive f -Divergence (with Reparameterization Gradient)

Goal: Find the best approximation of $p(x)$ from $\{q_\theta : \theta \in \Theta\}$. Assume $x \sim q_\theta$ is generated by $x = g_\theta(\xi)$ where ξ is a random sample from noise distribution q_0 .

Initialize θ , set an index β (e.g., $\beta = -1$).

for iteration **do**

Draw $\{x_i\}_{i=1}^n \sim q_\theta$, generated by $x_i = g_\theta(\xi_i)$.

Let $w_i = p(x_i)/q_\theta(x_i)$, $\hat{F}_w(t) = \sum_{j=1}^n \mathbb{I}(w_j \geq t)/n$, and set $\gamma_i = \hat{F}_w(w_i)^\beta$.

Update $\theta \leftarrow \theta + \epsilon \Delta\theta$, with ϵ is step size, and

$$\Delta\theta = \frac{1}{z_\gamma} \sum_{i=1}^n [\gamma_i \nabla_{\theta} g_{\theta}(\xi_i) \nabla_x \log(p(x_i)/q_{\theta}(x_i))], \quad \text{where } z_\gamma = \sum_{i=1}^n \gamma_i.$$

end for

In practice, the explicit form of $\bar{F}_w(t)^\beta$ is unknown. We can approximate it based on empirical data drawn from q . Let $\{x_i\}$ be drawn from q and $w_i = p(x_i)/q(x_i)$, then we can approximate the tail probability with $\hat{F}_w(t) = \frac{1}{n} \sum_{i=1}^n \mathbb{I}(w_i \geq t)$. Intuitively, this corresponds to assigning each data point a weight according to the rank of its density ratio in the population. Substituting the empirical tail probability into the reparameterization gradient formula in (8) and running a gradient descent with stochastic approximation yields our main algorithm shown in Algorithm 1. The version with the score-function gradient is similar and is shown in Algorithm 2 in the Appendix. Both algorithms can be viewed as minimizing the implicitly constructed adaptive f -divergences, but correspond to using different f .

Compared with typical VI with reparameterized gradients, our method assigns a weight $\rho_i = \hat{F}_w(w_i)^\beta$, which is proportional to $\#w_i^\beta$ where $\#w_i$ denotes the rank of data w_i in the population $\{w_i\}$. When taking $-1 < \beta < 0$, this allows us to penalize places with high ratio $p(x)/q(x)$, but avoid to be overly aggressive. In practice, we find that simply taking $\beta = -1$ almost always yields the best empirical performance (despite needing $\beta > -1$ theoretically). By comparison, minimizing the classical α -divergence would have a weight of w_i^α ; if α is too large, the weight of a single data point becomes dominant, making gradient estimate unstable.

6 Experiments

In this section, we evaluate our adaptive f -divergence with different models. We use reparameterization gradients as default since they have smaller variances (Kingma & Welling, 2014) and normally yield better performance than score function gradients. Our code is available at <https://github.com/dilinwang820/adaptive-f-divergence>.

6.1 Gaussian Mixture Toy Example

We first illustrate the approximation quality of our proposed adaptive f -divergence on Gaussian mixture models. In this case, we set our target distribution to be a Gaussian mixture $p(x) = \sum_{i=1}^k \frac{1}{k} \mathcal{N}(x; \nu_i, 1)$, for $x \in \mathbb{R}^d$, where the elements of each mean vector ν_i is drawn from uniform($[-s, s]$). Here s can be viewed as controlling the Gaussianity of the target distribution: p reduces to standard Gaussian distribution when $s = 0$ and is increasingly multi-modal when s increases. We fix the number of components to be $k = 10$, and initialize the proposal distribution using $q(x) = \sum_{i=1}^{20} w_i \mathcal{N}(x; \mu_i, \sigma_i^2)$, where $\sum_{i=1}^{20} w_i = 1$.

We evaluate the mode-seeking ability of how q covers the modes of p using a “mode-shift distance” $dist(p, q) := \sum_{i=1}^{10} \min_j \|\nu_i - \mu_j\|_2 / 10$, which is the average distance of each mode in p to its nearest mode in distribution q . The model is optimized using Adagrad with a constant learning rate 0.05. We use a minibatch of size 256 to approximate the gradient in each iteration. We train the model for 10,000 iterations. To learn the component weights, we apply the Gumble-Softmax trick (Jang et al., 2017; Maddison et al., 2017) with a temperature of 0.1. Figure 1 shows the result when we obtain random mixtures p using $s = 5$, when the dimension d of x equals 2 and 10, respectively.

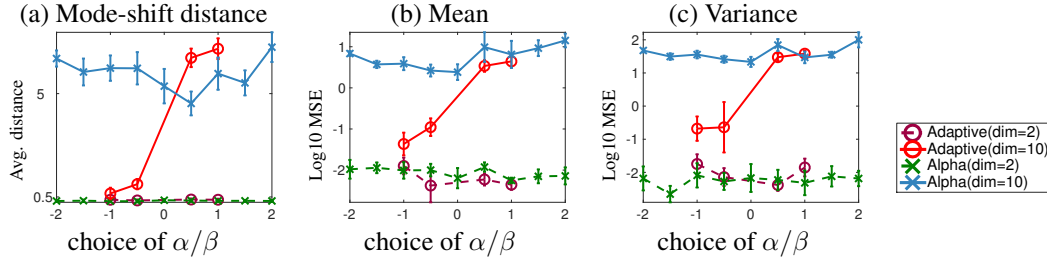


Figure 1: (a) plots the mode-shift distance between p and q ; (b-c) show the MSE of mean and variance between the true posterior p and our approximation q , respectively. All results are averaged over 10 random trials.

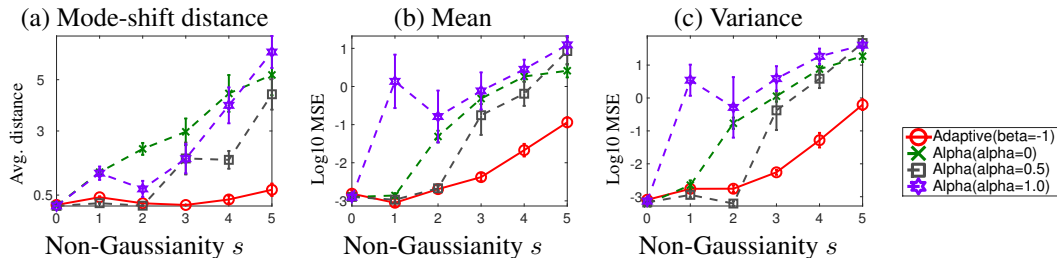


Figure 2: Results on randomly generated Gaussian mixture models. (a) plots the average mode-shift distance; (b-c) show the MSE of mean and variance. All results are averaged over 10 random trials.

We can see that when the dimension is low ($= 2$), all algorithms perform similarly well. However, as we increase the dimension to 10, our approach with tail-adaptive f -divergence achieves the best performance.

To examine the performance of variational approximation more closely, we show in Figure 2 the average mode-shift distance and the MSE of the estimated mean and variance as we gradually increase the non-Gaussianity of $p(x)$ by changing s . We fix the dimension to 10. We can see from Figure 2 that when p is close to Gaussian (small s), all algorithms perform well; when p is highly non-Gaussian (large s), we find that our approach with adaptive weights significantly outperform other baselines.

6.2 Bayesian Neural Network

We evaluate our approach on Bayesian neural network regression tasks. The datasets are collected from the UCI dataset repository³. Similarly to Li & Turner (2016), we use a single-layer neural network with 50 hidden units and ReLU activation, except that we take 100 hidden units for the Protein and Year dataset which are relatively large. We use a fully factorized Gaussian approximation to the true posterior and Gaussian prior for neural network weights. All datasets are randomly partitioned into 90% for training and 10% for testing. We use Adam optimizer (Kingma & Ba, 2015) with a constant learning rate of 0.001. The gradient is approximated by $n = 100$ draws of $x_i \sim q_\theta$ and a minibatch of size 32 from the training data points. All results are averaged over 20 random partitions, except for Protein and Year, on which 5 trials are repeated.

We summarize the average RMSE and test log-likelihood with standard error in Table 1. We compare our algorithm with $\alpha = 0$ (KL divergence) and $\alpha = 0.5$, which are reported as the best for this task in Li & Turner (2016). More comparisons with different choices of α are provided in the appendix. We can see from Table 1 that our approach takes advantage of an adaptive choice of f -divergence and achieves the best performance for both test RMSE and test log-likelihood in most of the cases.

³<https://archive.ics.uci.edu/ml/datasets.html>

dataset	Average Test RMSE			Average Test Log-likelihood		
	$\beta = -1.0$	$\alpha = 0.0$	$\alpha = 0.5$	$\beta = -1.0$	$\alpha = 0.0$	$\alpha = 0.5$
Boston	2.828 ± 0.177	2.956 ± 0.171	2.990 ± 0.173	-2.476 ± 0.177	-2.547 ± 0.171	-2.506 ± 0.173
Concrete	5.371 ± 0.115	5.592 ± 0.124	5.381 ± 0.111	-3.099 ± 0.115	-3.149 ± 0.124	-3.103 ± 0.111
Energy	1.377 ± 0.034	1.431 ± 0.029	1.531 ± 0.047	-1.758 ± 0.034	-1.795 ± 0.029	-1.854 ± 0.047
Kin8nm	0.085 ± 0.001	0.088 ± 0.001	0.083 ± 0.001	1.055 ± 0.001	1.012 ± 0.001	1.080 ± 0.001
Naval	0.001 ± 0.000	0.001 ± 0.000	0.004 ± 0.000	5.468 ± 0.000	5.269 ± 0.000	4.086 ± 0.000
Combined	4.116 ± 0.032	4.161 ± 0.034	4.154 ± 0.042	-2.835 ± 0.032	-2.845 ± 0.034	-2.843 ± 0.042
Wine	0.636 ± 0.008	0.634 ± 0.007	0.634 ± 0.008	-0.962 ± 0.008	-0.959 ± 0.007	-0.971 ± 0.008
Yacht	0.849 ± 0.059	0.861 ± 0.056	1.146 ± 0.092	-1.711 ± 0.059	-1.751 ± 0.056	-1.875 ± 0.092
Protein	4.487 ± 0.019	4.565 ± 0.026	4.564 ± 0.040	-2.921 ± 0.019	-2.938 ± 0.026	-2.928 ± 0.040
Year	8.831 ± 0.037	8.859 ± 0.036	8.985 ± 0.042	-3.570 ± 0.037	-3.600 ± 0.036	-3.518 ± 0.042

Table 1: Average test RMSE and log-likelihood for Bayesian neural regression.

6.3 Application in Reinforcement Learning

We now demonstrate an application of our method in reinforcement learning, applying it as an inner loop to improve a recent soft actor-critic(SAC) algorithm (Haarnoja et al., 2018). We start with a brief introduction of the background of SAC and then test our method in MuJoCo⁴ environments.

Reinforcement Learning Background Reinforcement learning considers the problem of finding optimal policies for agents that interact with uncertain environments to maximize the long-term cumulative reward. This is formally framed as a Markov decision process in which agents iteratively take actions a based on observable states s , and receive a reward signal $r(s, a)$ immediately following the action a performed at state s . The change of the states is governed by an unknown environmental dynamic defined by a transition probability $T(s'|s, a)$. The agent’s action a is selected by a conditional probability distribution $\pi(a|s)$ called policy. In policy gradient methods, we consider a set of candidate policies $\pi_\theta(a|s)$ parameterized by θ and obtain the optimal policy by maximizing the expected cumulative reward

$$J(\theta) = \mathbb{E}_{s \sim d_\pi, a \sim \pi(a|s)} [r(s, a)],$$

where $d_\pi(s) = \sum_{t=1}^{\infty} \gamma^{t-1} \Pr(s_t = s)$ is the unnormalized discounted state visitation distribution with discount factor $\gamma \in (0, 1)$.

Soft Actor-Critic (SAC) is an off-policy optimization algorithm derived based on maximizing the expected reward with an entropy regularization. It iteratively updates a Q-function $Q(a, s)$, which predicts that cumulative reward of taking action a under state s , as well as a policy $\pi(a|s)$ which selects action a to maximize the expected value of $Q(s, a)$. The update rule of $Q(s, a)$ is based on a variant of Q-learning that matches the Bellman equation, whose detail can be found in Haarnoja et al. (2018). At each iteration of SAC, the update of policy π is achieved by minimizing KL divergence

$$\pi^{\text{new}} = \arg \min_{\pi} \mathbb{E}_{s \sim d} [\text{KL}(\pi(\cdot|s) \parallel p_Q(\cdot|s))], \quad (9)$$

$$p_Q(a|s) = \exp\left(\frac{1}{\tau}(Q(a, s) - V(s))\right), \quad (10)$$

where τ is a temperature parameter, and $V(s) = \tau \log \int_a \exp(Q(a, s)/\tau)$, serving as a normalization constant here, is a soft-version of value function and is also iteratively updated in SAC. Here, $d(s)$ is a visitation distribution on states s , which is taken to be the empirical distribution of the states in the current replay buffer in SAC. We can see that (9) can be viewed as a variational inference problem on conditional distribution $p_Q(a|s)$, with the typical KL objective function ($\alpha = 0$).

SAC With Tail-adaptive f -Divergence To apply f -divergence, we first rewrite (9) to transform the conditional distributions to joint distributions. We define joint distribution $p_Q(a, s) = \exp((Q(a, s) - V(s))/\tau)d(s)$ and $q_\pi(a, s) = \pi(a|s)d(s)$, then we can show that $\mathbb{E}_{s \sim d}[\text{KL}(\pi(\cdot|s) \parallel p_Q(\cdot|s))] = \text{KL}(q_\pi \parallel p_Q)$. This motivates us to extend the objective function in (9) to more general f -divergences,

$$D_f(p_Q \parallel q_\pi) = \mathbb{E}_{s \sim d} \mathbb{E}_{a|s \sim \pi} \left[f\left(\frac{\exp((Q(a, s) - V(s))/\tau)}{\pi(a|s)}\right) - f(1) \right].$$

⁴<http://www.mujooco.org/>

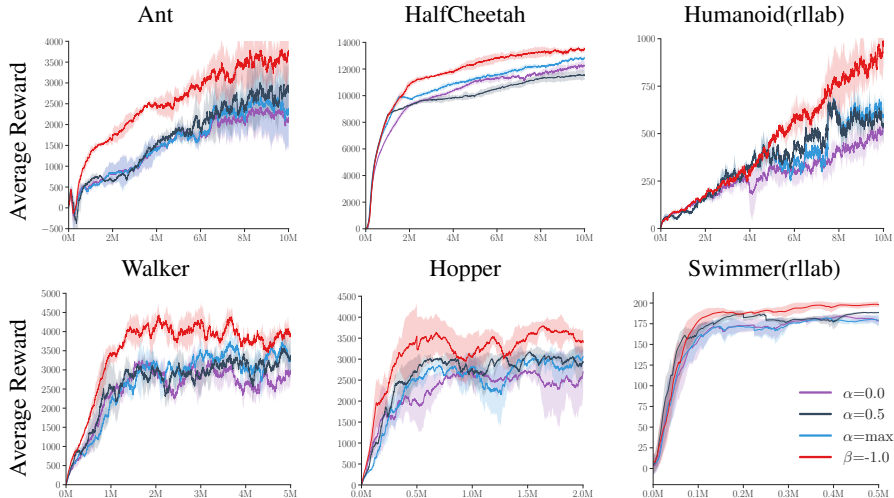


Figure 3: Soft Actor Critic (SAC) with policy updated by Algorithm 1 with $\beta = -1$, or α -divergence VI with different α ($\alpha = 0$ corresponds to the original SAC). The reparameterization gradient estimator is used in all the cases. In the legend, “ $\alpha = \max$ ” denotes setting $\alpha = +\infty$ in α -divergence.

By using our tail-adaptive f -divergence, we can readily apply our Algorithm 1 (or Algorithm 2 in the Appendix) to update π in SAC, allowing us to obtain π that counts the multi-modality of $Q(a, s)$ more efficiently. Note that the standard α -divergence with a fixed α also yields a new variant of SAC that is not yet studied in the literature.

Empirical Results We follow the experimental setup of Haarnoja et al. (2018). The policy π , the value function $V(s)$, and the Q-function $Q(s, a)$ are neural networks with two fully-connected layers of 128 hidden units each. We use Adam (Kingma & Ba, 2015) with a constant learning rate of 0.0003 for optimization. The size of the replay buffer for HalfCheetah is 10^7 , and we fix the size to 10^6 on other environments in a way similar to Haarnoja et al. (2018).

We compare with the original SAC ($\alpha = 0$), and also other α -divergences, such as $\alpha = 0.5$ and $\alpha = \infty$ (the $\alpha = \max$ suggested in Li & Turner (2016)). Figure 3 summarizes the total average reward of evaluation rollouts during training on various MuJoCo environments. For non-negative α settings, methods with larger α give higher average reward than the original KL-based SAC in most of the cases. Overall, our adaptive f -divergence substantially outperforms all other α -divergences on all of the benchmark tasks in terms of the final performance, and learns faster than all the baselines in most environments. We find that our improvement is especially significant on high dimensional and complex environments like Ant and Humanoid.

7 Conclusion

In this paper, we present a new class of tail-adaptive f -divergence and exploit its application in variational inference and reinforcement learning. Compared to classic α -divergence, our approach guarantees finite moments of the density ratio and provides more stable importance weights and gradient estimates. Empirical results on Bayesian neural networks and reinforcement learning indicate that our approach outperforms standard α -divergence, especially for high dimensional multi-modal distribution.

Acknowledgement

This work is supported in part by NSF CRII 1830161. We would like to acknowledge Google Cloud for their support.

References

- Blei, David M, Kucukelbir, Alp, and McAuliffe, Jon D. Variational inference: A review for statisticians. *Journal of the American Statistical Association*, 112(518):859–877, 2017.
- Burda, Yuri, Grosse, Roger, and Salakhutdinov, Ruslan. Importance weighted autoencoders. *International Conference on Learning Representations (ICLR)*, 2016.
- Cappé, Olivier, Douc, Randal, Guillin, Arnaud, Marin, Jean-Michel, and Robert, Christian P. Adaptive importance sampling in general mixture classes. *Statistics and Computing*, 18(4):447–459, 2008.
- Christopher, M Bishop. *Pattern Recognition and Machine Learning*. Springer-Verlag New York, 2016.
- Cotter, Colin, Cotter, Simon, and Russell, Paul. Parallel adaptive importance sampling. *arXiv preprint arXiv:1508.01132*, 2015.
- Csiszár, I. and Shields, P.C. Information theory and statistics: A tutorial. *Foundations and Trends in Communications and Information Theory*, 1(4):417–528, 2004.
- De Boer, Pieter-Tjerk, Kroese, Dirk P, Mannor, Shie, and Rubinstein, Reuven Y. A tutorial on the cross-entropy method. *Annals of operations research*, 134(1):19–67, 2005.
- Dieng, Adji Bousso, Tran, Dustin, Ranganath, Rajesh, Paisley, John, and Blei, David. Variational inference via χ upper bound minimization. In *Advances in Neural Information Processing Systems (NIPS)*, pp. 2732–2741, 2017.
- Feldman, Dorian and Osterreicher, Ferdinand. A note on f -divergences. *Studia Sci. Math. Hungar.*, 24:191–200, 1989.
- Gal, Yarín and Ghahramani, Zoubin. Dropout as a Bayesian approximation: Representing model uncertainty in deep learning. In *international conference on machine learning (ICML)*, pp. 1050–1059, 2016.
- Haarnoja, Tuomas, Zhou, Aurick, Abbeel, Pieter, and Levine, Sergey. Soft actor-critic: Off-policy maximum entropy deep reinforcement learning with a stochastic actor. *International Conference on Machine Learning (ICML)*, 2018.
- Hernández-Lobato, José Miguel, Li, Yingzhen, Rowland, Mark, Hernández-Lobato, Daniel, Bui, Thang, and Turner, Richard Eric. Black-box α -divergence minimization. *International Conference on Machine Learning (ICML)*, 2016.
- Hill, Bruce M et al. A simple general approach to inference about the tail of a distribution. *The annals of statistics*, 3(5):1163–1174, 1975.
- Hoffman, Matthew D, Blei, David M, Wang, Chong, and Paisley, John. Stochastic variational inference. *The Journal of Machine Learning Research*, 14(1):1303–1347, 2013.
- Jang, Eric, Gu, Shixiang, and Poole, Ben. Categorical reparameterization with Gumbel-softmax. *International Conference on Learning Representations (ICLR)*, 2017.
- Jordan, Michael I, Ghahramani, Zoubin, Jaakkola, Tommi S, and Saul, Lawrence K. An introduction to variational methods for graphical models. *Machine learning*, 37(2):183–233, 1999.
- Kingma, Diederik P and Ba, Jimmy. Adam: A method for stochastic optimization. *International Conference on Learning Representations (ICLR)*, 2015.
- Kingma, Diederik P and Welling, Max. Auto-encoding variational Bayes. *International Conference on Learning Representations (ICLR)*, 2014.
- Levine, Sergey. Reinforcement learning and control as probabilistic inference: Tutorial and review. *arXiv preprint arXiv:1805.00909*, 2018.
- Li, Yingzhen and Turner, Richard E. Rényi divergence variational inference. In *Advances in Neural Information Processing Systems (NIPS)*, pp. 1073–1081, 2016.
- Liese, Friedrich and Vajda, Igor. On divergences and informations in statistics and information theory. *IEEE Transactions on Information Theory*, 52(10):4394–4412, 2006.
- Maddison, Chris J, Mnih, Andriy, and Teh, Yee Whye. The concrete distribution: A continuous relaxation of discrete random variables. *International Conference on Learning Representations (ICLR)*, 2017.
- Minka, Thomas P. Expectation propagation for approximate Bayesian inference. In *Proceedings of the Seventeenth conference on Uncertainty in artificial intelligence (UAI)*, pp. 362–369. Morgan

- Kaufmann Publishers Inc., 2001.
- Minka, Tom et al. Divergence measures and message passing. Technical report, Microsoft Research, 2005.
- Opper, Manfred and Winther, Ole. Expectation consistent approximate inference. *Journal of Machine Learning Research*, 6(Dec):2177–2204, 2005.
- Osterreicher, Ferdinand. f-divergences—representation theorem and metrizableability. *Inst. Math., Univ. Salzburg, Salzburg, Austria*, 2003.
- Ranganath, Rajesh, Gerrish, Sean, and Blei, David. Black box variational inference. In *Artificial Intelligence and Statistics*, pp. 814–822, 2014.
- Reid, Mark D and Williamson, Robert C. Information, divergence and risk for binary experiments. *Journal of Machine Learning Research*, 12(Mar):731–817, 2011.
- Resnick, Sidney I. *Heavy-tail phenomena: probabilistic and statistical modeling*. Springer Science & Business Media, 2007.
- Ryu, Ernest K and Boyd, Stephen P. Adaptive importance sampling via stochastic convex programming. *arXiv preprint arXiv:1412.4845*, 2014.
- Sason, Igal. On f-divergences: Integral representations, local behavior, and inequalities. *Entropy*, 20(5):383, 2018.
- Vehtari, Aki, Gelman, Andrew, and Gabry, Jonah. Pareto smoothed importance sampling. *arXiv preprint arXiv:1507.02646*, 2015.
- Wainwright, Martin J, Jordan, Michael I, et al. Graphical models, exponential families, and variational inference. *Foundations and Trends® in Machine Learning*, 1(1–2):1–305, 2008.