
Supplementary

Geo-PIFu: Geometry and Pixel Aligned Implicit Functions for Single-view Human Reconstruction

Tong He¹, John Collomosse^{2,3}, Hailin Jin², Stefano Soatto¹
¹UCLA. ²Creative Intelligence Lab, Adobe Research. ³CVSSP, University of Surrey, UK.
{simpleig,soatto}@cs.ucla.edu {collomos,hljjin}@adobe.com

1 Implementation Details

Implementation details like network architectures, training/test scripts, pre-trained models, evaluation protocols and *etc.* can be found here <https://github.com/simpleig/Geo-PIFu>. Please check the README.md for step by step instructions.

2 More Results

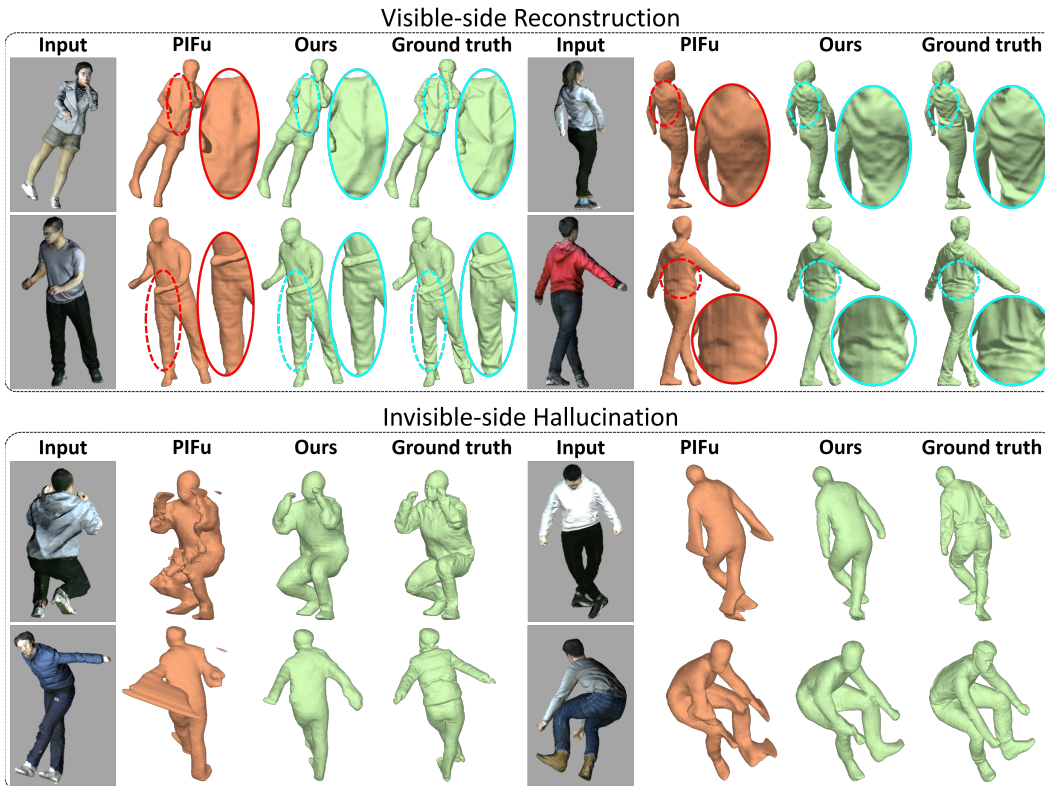


Figure 1: Single-view clothed human mesh reconstruction. Our results have less shape artifacts and distortions than PIFu. PIFu lacks global robustness when hallucinating invisible-side meshes of complex poses and large self-occlusion. Besides improved global regularities and better alignment with ground truth, our meshes also contain more accurate and clear local surface details than PIFu.

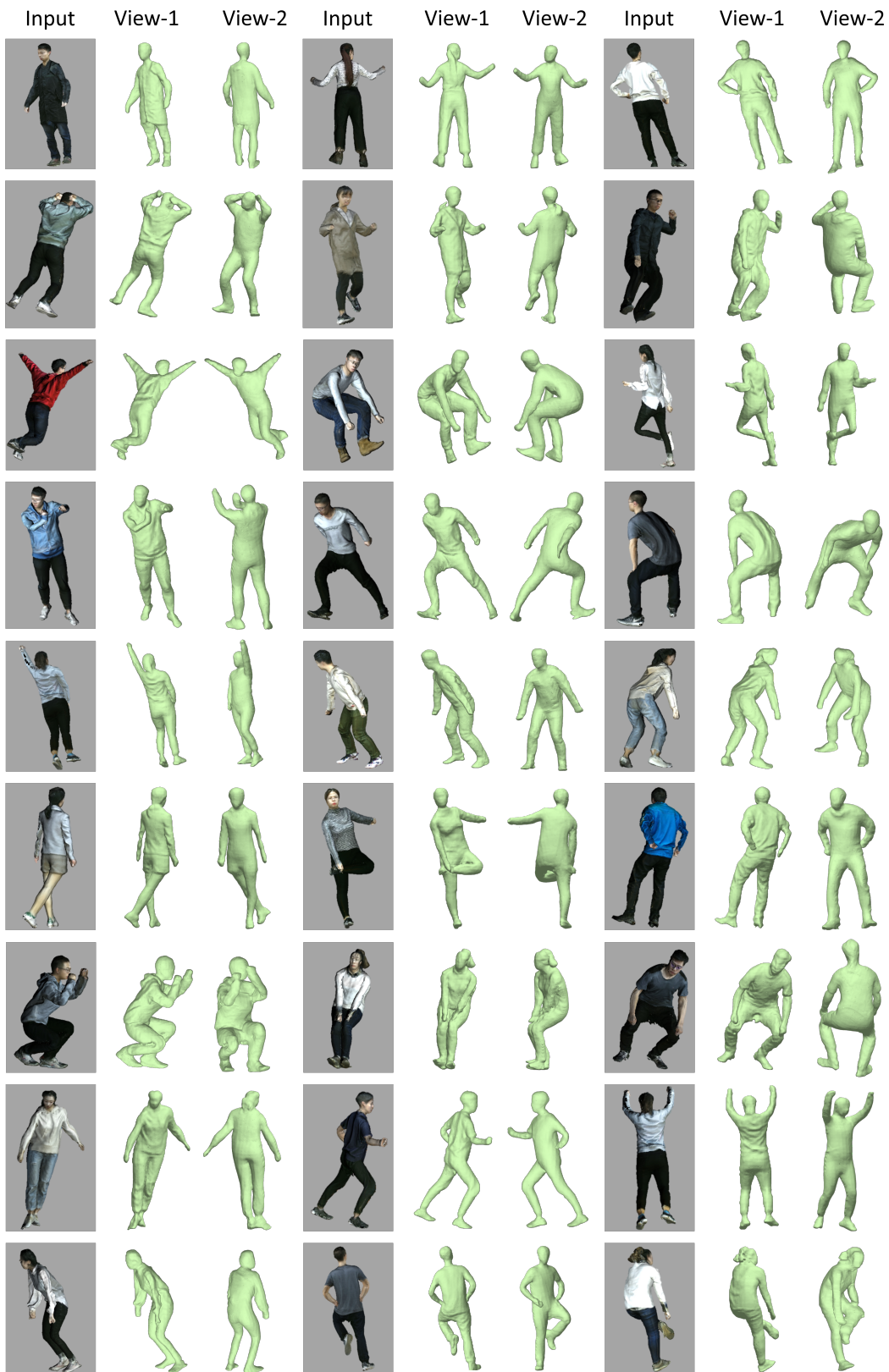


Figure 2: Single-view clothed human mesh reconstruction of our method Geo-PIFu.